



Stand Alone  
Engraving  
Solution

m20  
m20<sup>abc</sup>

Innovative solutions for engraving and marking

[www.gravograph.us](http://www.gravograph.us)

The most advanced rotary engraving machine on the market

## TECHNICAL SPECIFICATIONS

## ADDITIONAL ACCESSORIES

### INNOVATIVE

Gravograph rotary machines from Gravotech are available with a host of unique and innovative features.

An affordable, self contained, marking system that's convenient, easy-to operate and can replace your manual machine or the need to outsource your marking tasks.

Complete system includes engraving machine and software, tools, accessories and tutorial.



### CHARACTERISTICS

#### M20

- Machine Dimensions: 13.4 x 12.2 x 12.2 inches (340 x 310 x 310 mm)
- Engraving area: 3.9 x 3.9 inches (102 x 102 mm)
- Product Weight: 22 lbs (10 kg)
- Shipping Weight: 34 lbs (15.4 kg)
- Z stroke: 1.18 inches (30 mm)
- Max Holding Capacity: 4.7 x 1.57 x unlimited inches (119 x 40 x unlimited mm)

#### M20 ABC

- Machine Dimensions: 18.1 x 12.2 x 13.3 inches (459 x 310 x 338 mm)
- Engraving area: 3.9 x 3.9 inches (102 x 102 mm)
- Product Weight: 26 lbs (11.7 kg)
- Shipping Weight: 38 lbs (17 kg)
- Max Holding Capacity: 4.7 x 1.57 x unlimited inches (119 x 40 x unlimited mm)

### STANDARD FEATURES

#### M20

- 90W spindle motor
- Tool box
- Auto Z reference
- Point and Shoot

#### M20 ABC

- One Touch with stylus
- One Touch pad support
- USB cable & main cable
- Standard "K" keyboard
- CD with user instruments
- Tool box

- Numerous jigs
- Collet spindle
- Concentric tightening vice
- Diamond drap attachment
- 4 axis pen attachment\*
- 4 axis ring attachment\*
- PhotoStyle\*
- Dedicace™\*

\* Factory installed accessories compatible only with GravoStyle™



### VERSATILE

The M20 engraving solution is a standalone easy to use solution for engraving on plastic and metal materials, for production on tags, name plates, award plates, garden markers, ornamental and sign plates as well as personalization. Working with a separate computer or completely autonomous with the One Touch Pad, the M20 is a perfect all around machine.

### EXCEPTIONAL SOFTWARE

Powered by GravoStyle™ software. This unique software platform concentrates Gravotech engraving expertise to offer you full support, whatever your engraving application. The software synchronizes your M20 and its accessories, creating a powerful production team.

The M20ABC's user interface is included in the solution, requiring no additional computer. It's software is supported by a tactile screen allowing the design of plates with lines of text, logos and drawings. The files are saved on an SD card.

### PERFORMANCE

The M20 combines Gravotech engraving and build quality with ground-breaking productivity. Easy clamping of plates and other objects with self-centering vice. Integrated vice and pen attachment provides quick change-over and increases productivity

### ERGONOMICS AND DESIGN

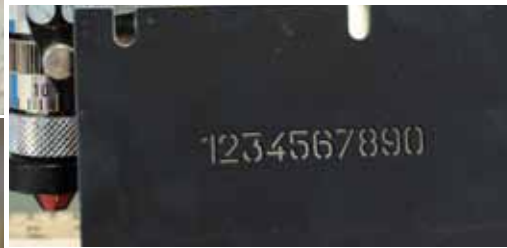
The M20 design features a depth nose allowing for constant engraving, particularly on uneven surfaces. Error-free engraving lets you simulate your job before you engrave using the integrated red laser pointer - no measuring required. Effortless cutter change and setup as well as auto Z reference greatly decrease production times. Taking up only one square foot of counter space this machine is perfect for all store fronts & shops.



## APPLICATIONS

Since 1938, Gravotech brands have been global leaders in the design, manufacturing and distribution of innovative solutions for engraving, marking and artistic modeling.

[www.gravograph.us](http://www.gravograph.us)



### IDEAL FOR:

M20

- Watches & bracelets
- Gift items
- ID badges
- Small signs
- Industrial tags
- Identification and legends

M20 ABC

- Small signage
- Rating tags
- Small funeral plates
- Name badges
- Keys & key chains

The Gravotech Group represents a worldwide network present in 30 countries with more than 900 employees working around the clock to provide customers with exceptional permanent marking solutions. As a global leader in durable marking technologies such as engraving, laser, micro-percussion and scribing, we utilize our expertise to develop and market equipment, software and consumables for every application, from personalization to architectural signage and industrial part marking.

**Gravograph, is a registered trademark of Gravotech, Inc.**

2200 Northmont Parkway | Duluth, GA 30096

Toll Free: (1) 800.843.7637 | Tel. : (1) 770.623.0331 | Fax : (1) 770.495.3676

[sales@us.gravotech.com](mailto:sales@us.gravotech.com)

M20\_Leaflet\_EN\_V2\_0914 - Gravotech, Inc. reserves all rights on improvement and modification of its products.  
This document is not contractual. © Gravotech, Inc. - 2200 Northmont Parkway, Duluth, Georgia 30096 | USA

**GRAVOGRAPH** 

GRAVOTECH GROUP